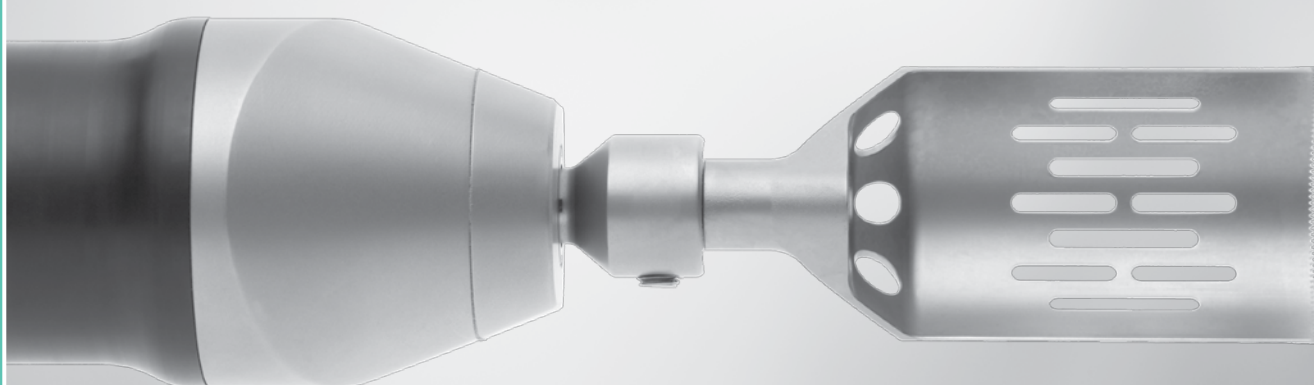


# Aesculap® Veterinary Orthopaedics

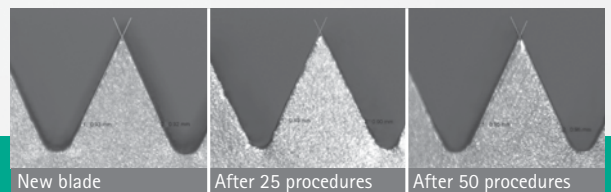
## Tibial Plateau Leveling Osteotomy



# Tibial Plateau Leveling Osteotomy



## Aesculap Saw Blade



... from small  
to large the perfect cut.

- Light weight
- Less vibration
- Low heat
- Controlled, reproducible, gentle dissection
- Standard triangular shaft

Art. No.	Radius
GC538R	12 mm
GC539R	15 mm
GC544R	18 mm
GC545R	21 mm
GC546R	24 mm
GC547R	27 mm
GC548R	30 mm



## TPLO Battery Power System

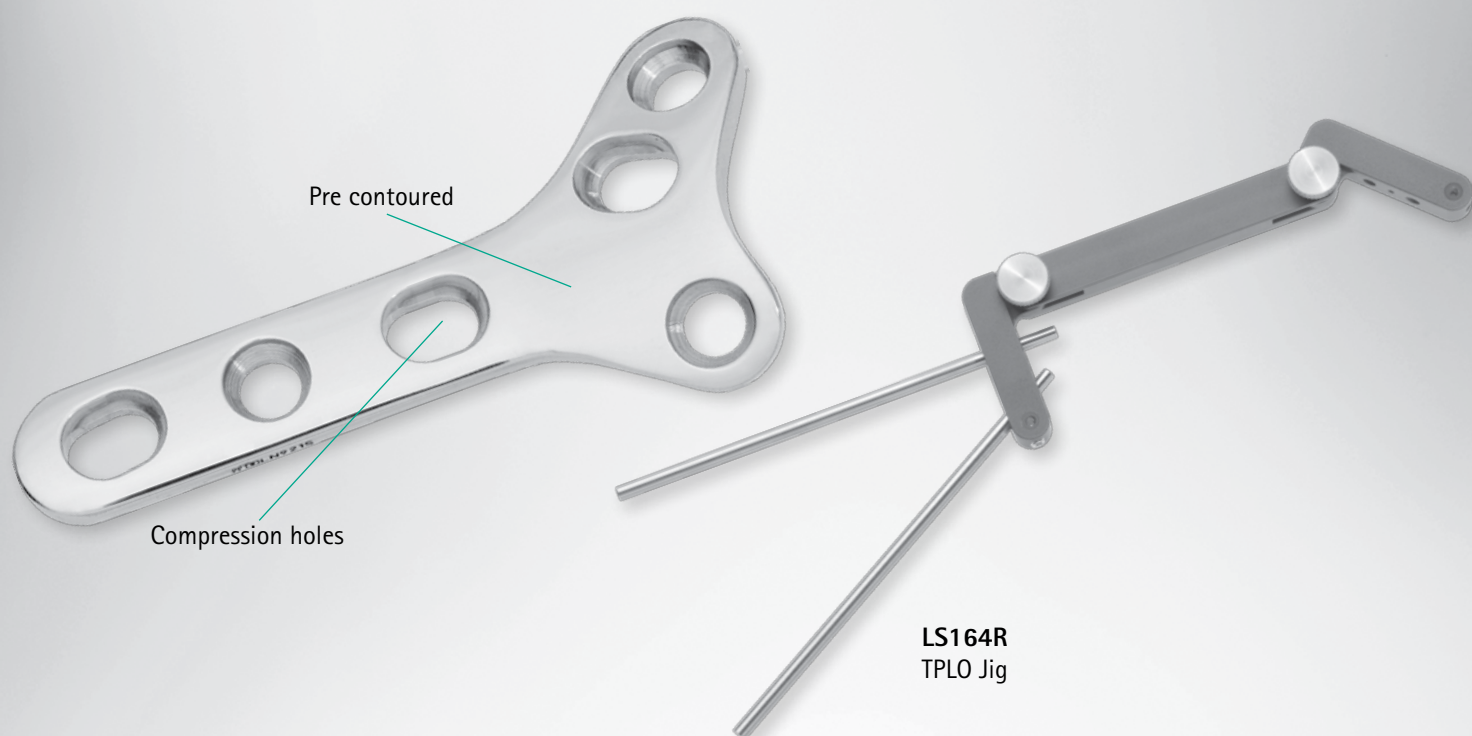
Max. Power	250 W
Oscillation frequency	0-ca. 15 000 1/min
Oscillation angle	ca. 6.5 °
Weight (with battery)	ca. 1.48 kg
Size	ca. 280 x 54 x 74 mm

... starting  
the next generation.

- Powerful – less vibration
- Developed for the perfect cut
- Ergonomic design and easy handling
- Titanium housing
- Variable speed

Art. No.	Type
GT668	Acculan TPLO Saw*
GA677	Charger
GA666	Battery
GA678	Sterile funnel
GB498R	Eccos fixation for Aesculap sterile containers

\*included in delivery GA666, GA678



## Aesculap TPLO Plates and Jig

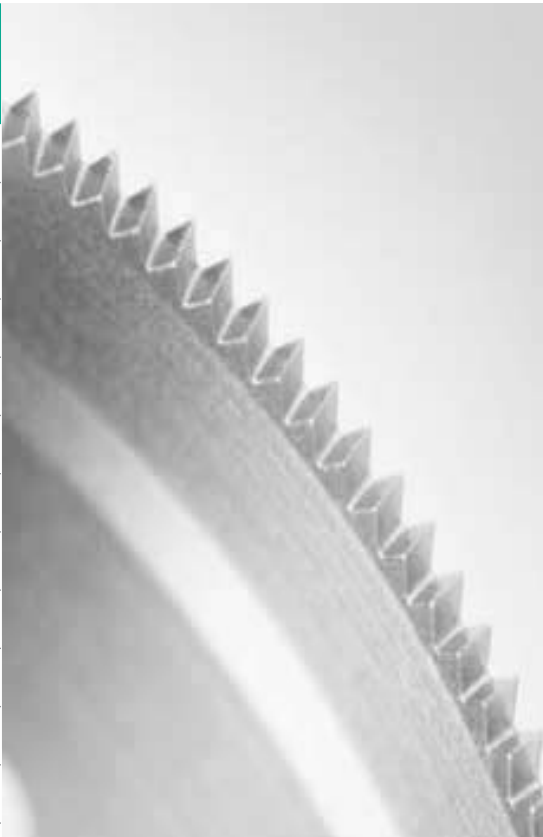
... Aesculap Implants –  
high quality standards since decades.

- Pre contoured
- Compression and round holes
- Available in 3 different sizes

Art. No.	Type	Screws	Holes	Thickness	Length	Width
LN910S	left	2.7	3+3 DC	2.5 mm	38.8 mm	8 mm
LN911S	right	2.7	3+3 DC	2.5 mm	38.8 mm	8 mm
LN920S	left	3.5	3+3 DC	3.0 mm	51 mm	10 mm
LN921S	right	3.5	3+3 DC	3.0 mm	51 mm	10 mm
LN930S	left	3.5	3+3 DC	3.5 mm	65 mm	12 mm
LN931S	right	3.5	3+3 DC	3.5 mm	65 mm	12 mm

# Aesculap Rotation Chart

TPA	Saw Blade						
	12 mm	15 mm	18 mm	20 mm	24 mm	27 mm	30 mm
15	2	2.6	3	3.5	4.25	4.75	5.25
16	2.2	2.8	3.25	3.75	4.5	5.2	5.75
17	2.4	3.1	3.75	4.1	5	5.65	6.25
18	2.6	3.3	4	4.5	5.5	6.1	6.75
19	2.9	3.6	4.25	4.85	6	6.55	7.25
20	3.1	3.8	4.5	5.1	6.25	7	7.75
21	3.3	4.1	4.75	5.55	6.75	7.45	8.3
22	3.5	4.3	5	5.9	7	7.9	8.85
23	3.7	4.6	5.5	6.2	7.5	8.35	9.4
24	3.9	4.9	5.75	6.5	8	8.8	10
25	4.1	5.1	6	6.85	8.25	9.25	10.4
26	4.3	5.4	6.25	7.2	8.75	9.7	11
27	4.5	5.7	6.75	7.5	9	10.15	11.5
28	4.7	5.9	7	7.9	9.5	10.6	12
29	5	6.2	7.25	8.25	10	11.05	12.5
30	5.2	6.4	7.5	8.6	10.25	11.5	13
31	5.4	6.7	8	8.9	10.75	12	13.5
32	5.6	7	8.25	9.3	11	12.45	14
33	5.8	7.3	8.5	9.65	11.5	12.9	14.5
34	6	7.5	8.75	10	12	13.35	15
35	6.2	7.8	9	10.3	12.25	13.8	15.5
36	6.4	8	9.5	10.7	12.75	14.25	16
37	6.6	8.3	9.75	11	13	14.7	16.5
38	6.8	8.6	10	11.4	13.5	15.15	17
39	7	8.8	10.25	11.75	14	15.6	17.5
40	7.2	9	10.5	12	14.25	16.05	18





B. Braun Vet Care GmbH | Am Aesculap-Platz | 78532 Tuttlingen | Germany  
Fax +49 (0) 74 61 715 12 | [info@bbraun-vetcare.de](mailto:info@bbraun-vetcare.de) | [www.bbraun-vetcare.com](http://www.bbraun-vetcare.com)

Aesculap – a B. Braun company

The main product mark 'Aesculap' is a registered mark of Aesculap AG.

All rights reserved. Technical alterations are possible. This leaflet may be used in no way whatsoever other than for the offering, buying and selling of our products.

No part may be copied or reproduced in any form. In the case of misuse we retain the right to recall our catalogues and pricelists and to take legal action.